



Table of contents:

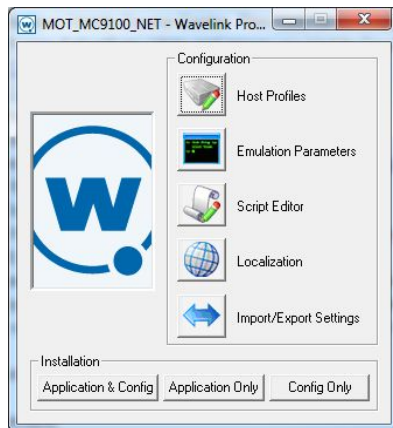
1. Setting up Wavelink client on PC.
    - a. (Alternate) Setting up Stay-Linked.
  2. Setting up your mobile unit.
  3. Mobile unit wireless connection setup instructions.
  4. If using SSH(recommended) instead of Telnet.
  5. IF WT41N0 wearable paired with Bluetooth back-of-the-hand scanner RS057.
  6. Zebra ZQ510 printer recommended setup.
  7. FAQ
-



### 1) SETTING UP WAVELINK CLIENT ON PC.

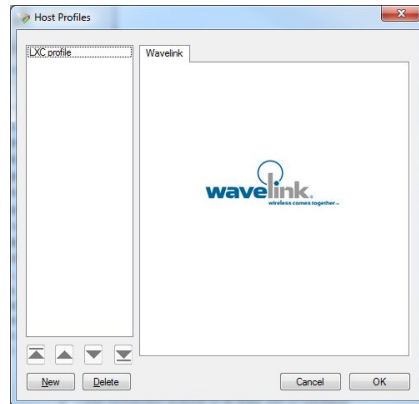
- This is the software that allows your PC to communicate with your mobile device.
- This section explains how to do the setup if you are using Wavelink. If you are using Stay-Linked, then jump to the section “SETTING UP STAY-LINKED CLIENT”.
- If you already have Wavelink installed, jump to step 3 below.

1. Install ActiveSync or Windows Mobile Device Center. This must be installed before installing Wavelink (Windows XP uses ActiveSync, Vista and newer use Mobile Device Center).
    - a. [Mobile Device Center \(64 bit\)](#) (Vista and newer)
    - b. [Mobile Device Center \(32 bit\)](#) (Vista and newer)
    - c. [ActiveSync](#) (Windows XP)
  2. Use Wavelink configuration tool to set up configurations
    - a. If you don't already have Wavelink, you can download it from this link:  
<http://www.wavelink.com/download>
      - i. Search for the brand and type of your device.
      - ii. In the Downloads section, go to Emulators tab
      - iii. Expand the section corresponding to your device's operating system(CE, WM or Android).
      - iv. It will specify which versions are pre-licensed. Find the latest version that is for ActiveSync, and also does **not** say “**This client is not pre-licensed...**”. You may need to expand “Previous versions” to find one, since these versions are a bit older.
- Now that Wavelink client is installed:





### 3. Go into Host Profiles



- a. Click the “New” button
- b. Type a Profile Name into the name field
- c. Choose SSH or Telnet. We recommend SSH for a more stable connection, but it does require an additional step of installing the package. If you chose SSH, go take a look at the “If using SSH” section below.
- d.

#### IF using SSH (recommended) instead of Telnet

1. Go to the [wavelink.com/download](http://wavelink.com/download) page and search for SSH.
  2. Confirm the device is connected through ActiveSync
  3. Download and install the Wavelink Emulation Client SSH Support package
  4. Download and install the ActiveSync version of the SSH Emulation package
  5. Make sure “Install to Device” is checked
- 
- e. Address field is IP address of Produce Pro server
  - f. In the Type dropdown, set to VT220.
    - i. Go to VT Settings Tab.
    - ii. Set Telnet Negotiation Screen to “**handheld**”, “**wearable**”, or “**lift**” depending on unit type
  - g. Click OK.

### 4. Go into Emulation Parameters



- a. Go into Emulation section
  - i. Common section
    1. Double click on Program Exit Key: Set to **0018** (Which equates to “Ctrl-X”)
    2. Program Exit Password: **“producepro”** (or a password of your choosing)
    3. Host connection timeout to at least 300 (5 minutes)
      - a. The default is 30. This is the time that will elapse between connection to the host and acceptance of the entered UserID & Password.
    4. Sleep Timeout Battery Power to **30** Minutes
      - a. Set this to at least 30 minutes. Default is 3 minutes.
  - ii. Display section
    1. Fixed Screen Mode - **Enable**
    2. Font Name – Set to **Produce Pro Client**
    3. Font Size
      - a. **For vehicle mount units**, set this to be 19
      - b. **Non-vehicle units**, set this to 13 (tweak as necessary - if it is 1 line short, use 12 instead)
    4. Hide Horizontal Scroll Bar – Set to **Yes**
    5. Hide Menu – Set to **Yes**
    6. Hide Vertical Scroll Bar – Set to **Yes**
    7. Menu Toggle Key – Set to **<C><0x79>** (Ctrl-F10)
    8. Screen Centering – Set to **Top-Left Corner**
    9. Screen Panning - Set to **Disable**
    10. Start Menu – Set to **Show Restricted Start Menu**
      - a. If you are using Avalanche then set this to Show Standard Start Menu, and then through Avalanche set the settings in there to lock or hide the windows screens
- b. **ONLY For Vehicle mount units (or handhelds that will be cradled on forklift)**
  - i. **Go into Scanner section (for the vehicle mount units or handhelds that will be cradled)**



- ii. Common section
  - 1. Default Scanner: Set to "COM1" or "COM2"(COM2 seems to work better for the Thor units)
- iii. Go into Com Port section (for LS3408 attachable hand scanners to work)
  - 1. Com Port Mode = Scanner
  - 2. Com Port Block Data = Yes
  - 3. Com Port Ignore DSR = Yes
  - 4. Comp Port Ignore Nulls = Yes
  - 5. Com Port Parity Mask = 7F
  - 6. Use Com Input/Output = Yes
  - 7. You may also need to reference the LS3408 manual to scan a sequence of barcodes to establish a carriage return following each scan, as was required for our latest setup of lift mount units (12/20/11)

**c. ONLY for wearables (WT41N0) with bluetooth scanners (RS507)**

- i. Go to Com Port section, make the following changes:
    - 1. Com Port Block Data = Yes
    - 2. Com Port for IO = COM5
    - 3. Com Port Ignore DSR = Yes
    - 4. Com Port Ignore Nulls = Yes
    - 5. Com Port Mode = Scanner
    - 6. Com Port Parity Mask = 7F
    - 7. Use Com Port Input/Output = Yes
  - d. Go into Indicators section
    - i. Enable Battery Strength Indicator – Set to **Yes**
    - ii. Enable Signal Strength Indicator – Set to **Yes**
    - iii. Indicators screen settings – Set to **Bottom Right Corner; Small**
  - e. Click Save button on top left of Emulation Parameters window.
- 5. Connect mobile unit to computer either through cradle (handheld/wearable), or cable (vehicle mount). Delete all Wavelink files **EXCEPT SSH** (all files in the \Application\Wavelink folder and all files in the \Application folder that are named "WLApp'XXX'.reg")
  - 6. Click the **Application Only** button back in the Wavelink setup window to reinstall Wavelink on the device with the newest version.
  - 7. Once the installation is complete, use the **Config Only** option to send the configurations to the device that you just set up in the previous 2 steps: 'Emulation Parameters' and 'Host Profile'.
  - 8. Perform warm boot (may require a second warm boot if full start menu is still showing).
  - 9. Perform a cold boot. (Explanation of cold/warm boot in FAQ section.)

**(Alternate)**

**1a) SET UP STAY-LINKED CLIENT. If you are using Wavelink, view "SET UP WAVELINK CLIENT".**

- 1. Use Stay-Linked Administrator on desktop to set up configurations
- 2. Go to [www.stay-linked.com](http://www.stay-linked.com) to download the client piece



3. Goto Support&Download tab
4. Download/Resource Portal
  - a. Login
  - b. On the left select either the Motorola/Symbol option (for the MC9190) or select the HoneyWell/LXE option for the LXE units
  - c. Click on the Client Install link to download the client configuration tool
5. Extract the zip file
6. Connect the mobile device up to the computer you are running the configuration tool on.
  - a. Run the SETUP.EXE file
  - b. Put in the Produce Pro server ID, and then leave the port number as is
7. Perform a warm boot

## 2) SETTING UP YOUR MOBILE DEVICE

If you are using Wavelink, then you will need to have the following files on hand to perform these Unit Setup steps, if you are using Stay-Linked, then skip to the SETUP CLIENT (STAY-LINKED) section:

Device Files:

Font Files	File folder
MC9190 specific files	File folder
Startup Files	File folder
GetInstallFiles.bat.script	SCRIPT File
GetInstallFiles_Avalanche.bat.script	SCRIPT File
README.txt	Text Document

1. The Produce Pro WMS Team will send you a .zip with these files, however due to email restrictions, we will likely send with a different extension. Rename the file to have a '.zip' extension if it doesn't already. Extract the files out of the .zip file.
2. Run GetInstallFiles.bat file in Device Files (**if you use Avalanche instead do this with GetInstallFiles\_Avalanche.bat**). This creates an InstallFiles folder.
3. Go into My Computer and click on mobile device.

**LXE/Honeywell THOR vehicle mount units only. For other devices skip to step 5.**

4. **Set up THOR unit files**
  - a. You need to do this 1st before using the Thor units. If you don't do this, then the 1st time they are powered off, and then powered back on the next day, then all the Wavelink settings are gone. So, do this 1st, then install the APPLICATION and CONFIG option on the wavelink setup.  
[http://hsm.force.com/publickb/articles/HSM\\_Article/Wavelink-TE-does-not-hold-settings-up-on-restart](http://hsm.force.com/publickb/articles/HSM_Article/Wavelink-TE-does-not-hold-settings-up-on-restart)
  - b. On the device itself, go into Control Panel, Data Collection. On the Main tab, Device 1, set this to COM1 or COM2, depending on what you set the Wavelink setting to be. On the Data Options tab, Set to use AIM option. On the Settings, set the suffix to ^M
  - c. Go into the Install Files folder that was just created inside Device Files.



- d. Go into the THOR folder
- e. Go into the System folder
- f. Copy all files there into the System folder on the device.
- g. Delete the RFTERM.CAB in the System folder
- h. If you are using Wavelink Avalanche, run the LXE\_Enabler.cab program
  - i. This will reboot the device
  - ii. Find the Avalanche directory in the System Folder, copy the Enabler.exe into the System\Startup folder
- i. Go to the Set Up Client section

**All other units: Perform steps 5-9**

- 5. Go into the Install Files folder that was created inside Device Files by running the GetInstallFolders.bat file.
- 6. Go into the appropriate folder for the device you are setting up.
  - a. WT4\_\_\_ wearables use "wearable" folder
  - b. MC9190 handhelds use "handheld9190" folder
  - c. Others use "other" folder
- 7. Go into the Application folder
- 8. Copy all files/folders into the /Application folder on the device
- 9. Remove all .RUN files from \Application\StartUp, but leave *StartUpCtl.exe*.

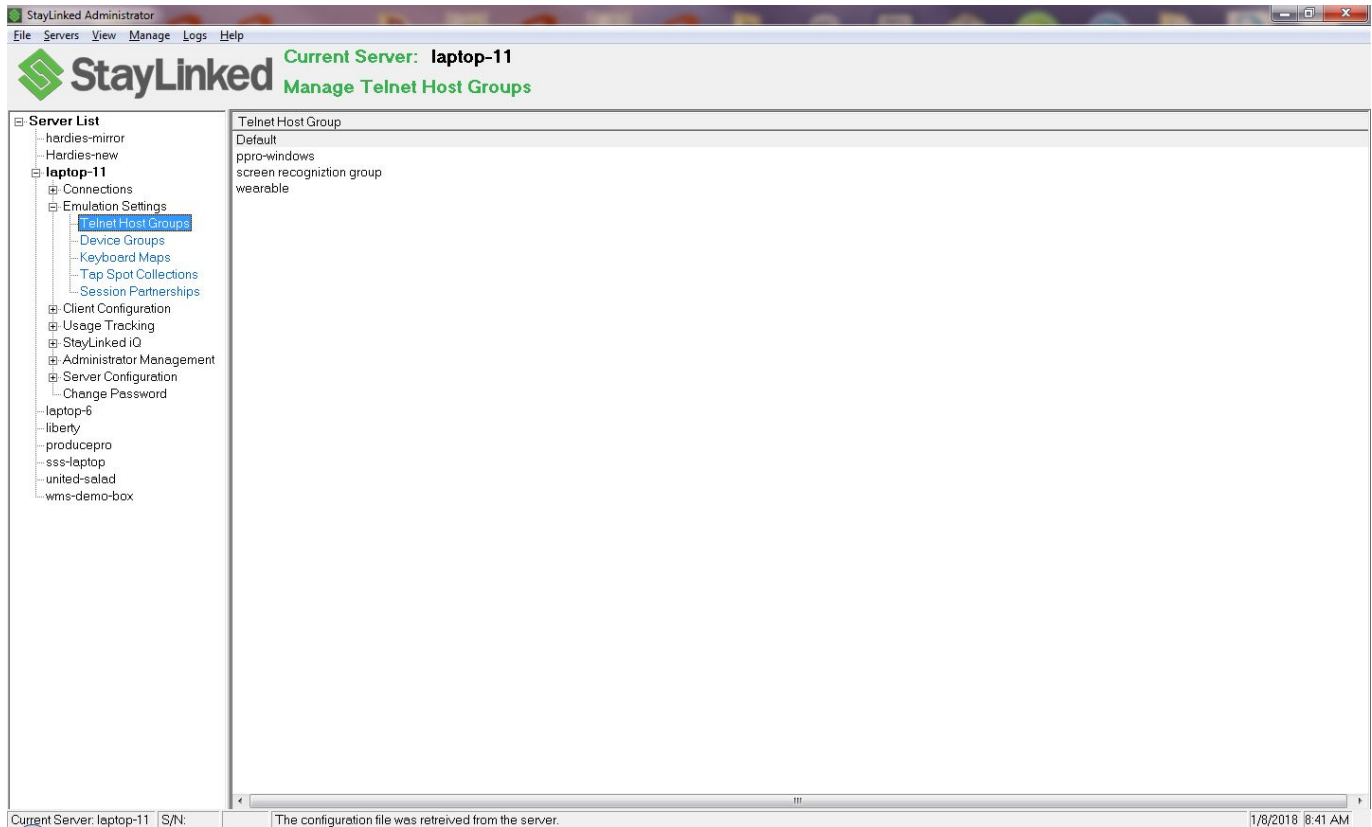




Delivering results you can see.

## SETUP CLIENT (STAY-LINKED)

1) Telnet Host Groups – Default Host Group should suffice.



2) Double click on the Default, right click inside Host name window, and then click ADD NEW

- a) NAME: give it a name
- b) Address: address of the produce pro server
- c) Emulation: VT-SSHv2
- d) Size: 24x80
- e) Locked: this box should be checked, Row and Col set to: 1
- f) Emulation Properties – right click and press Add new
- I) Host Code Page, Value=PC Multilingual (850)
- II) Host Code Page Unicode Processing, Value=True
- III) SSH Terminal Type, Value=VT220/420\_7(Default)
- IV) Terminal ID, Value=handheldsl
- V) VT ESC Sequence Processing, Value=Raw





Delivering results you can see.

**Add New Host Entry**

Manage Properties

Host Information

Name:

Address:  Telnet Port:

Emulation:  Size:

ViewPort

☐ Locked Row:  Col:  ☒ Follow the Cursor

Host Options

☐ Caps Lock ☐ Clear Field on Data Entry

Keyboard-Only Field Attribute:  Scan-Only Field Attribute:

Tap Spots Collection:

Host API Configuration

Separator Char:  Row:  Col:  ☐ Show API Screens

Host Startup Script

Reconnect Script

Insert Mnemonic:

Emulation Properties

Property	Value
----------	-------

### 3) Keyboard Maps

1. Right Click and ADD NEW, Device Name and Type should match that of the device you are configuring. (i.e. Zebra MC92N0 Android = name: Zebra MC92N0 Android, 53-key, Type=MC92N0A)



Delivering results you can see.

StayLinked Administrator

File Servers View Manage Logs Help

**StayLinked** Current Server: **laptop-11**  
Manage Keyboard Maps

Device Name	Device Type*	Emulati...	Based On
Windows Client	ESPPWIN32	5250	
Windows Client	ESPPWIN32	3270	
Windows Client	ESPPWIN32	VT	
Motorola MC9190 CE6.0, 53-key	MC9190C_53	VT	
<b>Zebra MC92N0 Android, 53-key</b>	<b>MC92N0A</b>	<b>VT</b>	
Stay-Linked Windows Client	SLWIN32	VT	
Zebra TC8000 Android Client	TC8000_AND	VT	
Motorola WT41N0 CE7.0, Two-Color	WT41N0_2T	VT	
Zebra WT6000 Android Client	WT6000_AND	VT	
Zebra Generic Android Client	ZEBRADROID	VT	

Server List

- hardies-mirror
- Hardies-new
- laptop-11**
  - Connections
  - Emulation Settings
    - Telnet Host Groups
    - Device Groups
    - Keyboard Maps
    - Tap Spot Collections
    - Session Partnerships
  - Client Configuration
  - Usage Tracking
  - StayLinked iO
  - Administrator Management
  - Server Configuration
  - Change Password
- laptop-6
- liberty
- producepro
- sss-laptop
- united-saled
- wms-demo-box

Current Server: laptop-11 | S/N: | Server configuration file matches the local administrator configuration file. | 1/8/2018 8:43 AM

4) Then you'll need to change the mapping for 4 of the keys: Up, Down, Left, and Right

1. Up =[hex 1B][A]
2. Down=[hex 1B][B]
3. Right=[hex 1B][C]
4. Left=[hex 1B][D]



Delivering results you can see.

Edit Keyboard Map			
File Key Map			
Device Name: Zebra MC92N0 Android, 53-key			
Device Type: MC92N0A			
Emulation: VT Based On:			
Modifier	Key	Code	Mnemonic
None	D	206400	
None	Del	2E0000	[delete]
None	Down	280000	[hex 1B]B]
None	Down	6C0000	[hex 1B]B]
None	E	126500	
None	End	230000	[eof]
None	Enter	0D0000	[enter]
None	ESC	010000	
None	F	216600	
None	F1	700000	[pf1]
None	F10	790000	[pf10]
None	F11	7A0000	[pf11]
None	F12	7B0000	[pf12]
None	F13	7C0000	[pf13]
None	F14	7D0000	[pf14]
None	F15	7E0000	[pf15]
None	F16	7F0000	[pf16]
None	F17	800000	[pf17]
None	F18	810000	[pf18]
None	F19	820000	[pf19]
None	F2	710000	[pf2]
None	F20	830000	[pf20]
None	F21	840000	
None	F22	850000	
None	F23	860000	
None	F24	870000	
None	F3	720000	[pf3]
None	F4	730000	[pf4]
None	F5	740000	[pf5]
None	F6	750000	[pf6]
None	F7	760000	[pf7]
None	F8	770000	[pf8]
None	F9	780000	[pf9]
None	G	226700	
None	H	236800	
None	Home	240000	[home]
None	I	176900	
None	Ins	2D0000	[insert]
None	J	246A00	
None	K	256B00	
None	L	266C00	
None	Left	250000	[hex 1B]D]
None	Left	690000	[hex 1B]D]
None	M	326D00	
None	N	316E00	
None	O	186F00	
None	P	197000	
None	PgDn	220000	[pagedn]
None	PgUp	210000	[pageup]
None	Q	107100	
None	R	137200	
None	RedDot	380000	

##### 5) Client Configuration – Client Settings:

1. See Screen shot, but you'll need the following settings turned on:
1. Client-Automatically Run, Value=On
2. Display-Fixed Columns Primary, Value=24
3. Display-Fixed Rows Primary, Value=16
4. Display-Full Screen Mode, Value=On
5. Security-Application Lockdown, Value=Show



Delivering results you can see.

StayLinked Administrator

File Servers View Manage Logs Help

**StayLinked** Current Server: laptop-11  
Manage Client Settings

Setting Name*	Setting Value	Level	Level Value	Enabled	Last Updated	Notes
Client - Automatically Run	On	Device Type	*	True	2017/03/31 14:51:06	Set to on to have the StayLinked Client auto...
Display - Extended Keys Toolbar	On	Device Type	TC8000*	True	2017/03/28 13:12:31	Displays the configurable tool bar at the bot...
Display - Fixed Columns Primary	24	Device Type	*	True	2013/12/18 09:38:07	Specify a fixed number of columns for the di...
Display - Fixed Rows Primary	16	Device Type	*	True	2013/12/18 09:38:21	Specify a fixed number of rows for the displ...
Display - Full Screen Mode	On	Device Type	*	True	2013/12/18 09:38:46	Set to on to use the entire display for the ter...
Scanner and Keyboard - Smart Keyboard ...	Full Screen	Device Type	TC8000*	True	2017/04/03 11:19:52	Change the style of the QWERTY Smart Ke...
Scanner and Keyboard - Smart Keyboard ...	High	Device Type	TC8000*	True	2017/04/03 11:17:20	This setting defines the transparency level...
Security - Application Lockdown	Show	Device Type	*	True	2017/04/03 11:15:26	Set to on to have the Start menu hidden and...
SmartTE - SmartMenu Mode	Manual (default)	Device Type	TC8000*	True	2017/04/17 07:37:32	Sets the SmartMenu Mode. Off to disable, M...
SmartTE - SmartMenu Screen Delay	500	Device Type	*	True	2017/04/19 08:36:40	Sets the delay (in milliseconds) after a scre...
SmartTE - SmartMenu Title Style	R10	Device Type	TC8000*	True	2017/04/03 11:22:35	String that describes how to parse the Smar...

Server List

- hardies-mirror
- Hardies-new
- laptop-11**
  - Connections
  - Emulation Settings
  - Client Configuration
    - Client Settings
    - Client Deployment
    - Scan2Command Profiles
    - Scan2Configure Profiles
  - Usage Tracking
  - StayLinked iQ
  - Administrator Management
  - Server Configuration
    - Change Password
- laptop-6
- liberty
- producepro
- sss-laptop
- united-salad
- wms-demo-box

Current Server: laptop-11 S/N: The configuration file was retrieved from the server. 1/8/2018 8:43 AM

### 3) Mobile Unit Wireless Connection Setup Instructions

- This step can be performed at any point in the sequence here, even before you installed Wavelink(or Staylinked). If you decide to do it as step 1, just make sure you do step 11 below correctly.(See FAQ #4)

1. On the Wireless Device, you need to be on the windows desktop screen. In the bottom right hand corner, on the task bar, click the wireless icon and a menu will pop up.
2. For first-time configurations, use the "FIND WLANS" option. For later configurations, use "Manage Profiles".
3. Double Click on Network, and use the "Connect" option.
  - a. This should fill in the options on the 1st page for the ESSID. If it does not, then enter the correct ESSID and hit "Next".
4. Hit Next on Operating Mode screen
5. Hit Next on Authentication screen
6. Choose Encryption mode, hit Next
7. Enter in WEP key or Passkey, then hit Next
8. Choose either DHCP or Static IP
  - a. If static, enter the network IP info
9. Hit Next on Transmit Power screen
10. Hit FINISH on Battery usage screen



11. Double click on the newly created wireless profile and hit export, then OK
12. Click on wireless icon in bottom right hand corner
13. Select OPTIONS.
14. Choose Regulatory option from drop down box. Uncheck the "Enable 802.11d" box
15. Choose Export option from drop down box.
  - a. Click on Export Options/Settings
    - i. Hit OK in upper right hand corner
  - b. Click on Export All Profiles (Maybe be Import/Export)
  - c. Hit OK in upper right hand corner

#### 4) IF WT41N0 wearable paired with Bluetooth back-of-the-hand scanner RS057

1. The install files should include 2 cab files: BTConnectionFix.cab and BTInitFix.cab. If they are not already, place these files in the Application folder of the device.
2. Find these files using the touch screen and double-click to install. Follow any additional prompts on the device for a normal install.

#### 5) Zebra ZQ510 recommended setup

Zebra recommends that the best way to set these is by attaching the printer to the computer via USB, go to Devices and Printers, right click and choose Printer Properties. Then go to Tools and Send command. These are the commands they recommend for initial setup:

```
! U1 setvar "media.type" "label"
! U1 setvar "media.sense_mode" "bar"
! U1 SPEED 5
! U1 setvar "print.tone" "15"
! U1 setvar "power.inactivity_timeout" "0"
! U1 setvar "power.sleep.timeout" "7200"
~jc^xa^jus^xz
```

#### 6) FAQ

1. How do I warm boot?
  - a. This is generally done by holding the power button on Motorola units
  - b. For LXE handhelds: Start -> run, then type WARMBOOT and hit OK.
2. How do I cold boot?
  - a. Motorola handhelds: Pop out battery, hold power button and scan trigger together for 10-15 seconds. Upon releasing the light bar below the screen should blink once. Plug the battery back in and hit the power button to start



- b. Motorola wearables: Hit power, 1, and 9 keys at the same time.
  - c. LXE handhelds: Start -> run, then type COLDBOOT and hit OK.
  - d. Successful cold boot will start up with white screen with “}}}” in the upper left corner.
3. (WAVELINK ONLY) The Produce Pro font is not showing up (too wide and window borders show up as dashes). It is using some other font and looks odd. How do I fix it?
  - a. If you forgot to cold boot after installation, do that now
  - b. If that didn't solve it, perform the following steps
    - i. Re-copy files to device using steps above in the SET UP UNIT section
    - ii. Cold boot device
  - c. If that fails
    - i. Go into the Font Files folder in the device files sent to you.
    - ii. Copy the ProduceProClient.tmp file there to /Application/Fonts/ on the device (or /System/Fonts for the THOR units).
    - iii. Then rename file on the device to have a .tff extension instead of .tmp
    - iv. Cold boot device
4. Wireless doesn't work after cold booting. What happened?
  - a. This usually happens because you didn't export Options and export All profiles when setting up the wireless. Go through the wireless setup again and make sure to do that step.
5. When installing Wavelink, TelnetCE or Avalanche Enabler on computer, I get an error saying RAPI.dll is missing. How do I fix this?
  - a. This usually happens because you don't have the syncing software installed on the computer you are using. Install ActiveSync (Windows XP) or Windows Mobile Device Center (Windows Vista/7/8), then re-try installing the Wavelink software.